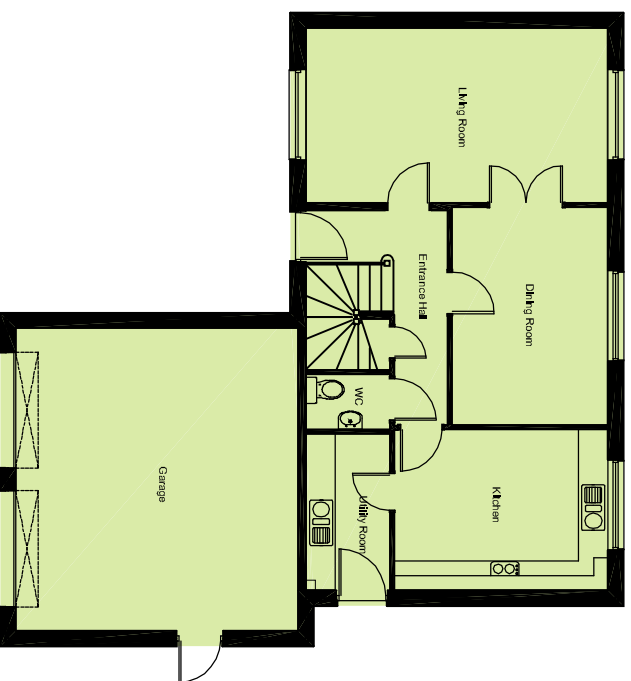




Clover Way

House Type Kimmundy



Ground Floor Layout



First Floor Layout

ground floor layout		
living room	3,445 x 5,975	11'3" x 19'7"
dining room	4,305 x 5,075	14'7" x 10'1"
kitchen	3,160 x 4,225	10'4" x 13'10"
utility room	3,090 x 1,850	10'1" x 5'5"
lodel	1,075 x 1,650	3'6" x 5'5"

first floor layout		
bedroom 1	3,535 x 4,060	11'7" x 13'4"
bedroom 2	3,525 x 4,750	11'6" x 15'7"
bedroom 3	3,315 x 2,835	10'10" x 9'3"
bedroom 4	3,400 x 2,835	11'2" x 9'3"
bathroom	1,775 x 2,850	5'10" x 9'4"
en-suite	1,365 x 1,690	4'5" x 5'6"
dressing	0,975 x 1,915	3'2" x 6'3"

WARNING TO HOUSE PURCHASERS

The contents of this drawing may be subject to change at any time and alterations and variations can occur during the progress of the works without revision of this drawing.

Nor do the contents of this drawing constitute a contract, part of any contract, or a warranty.

