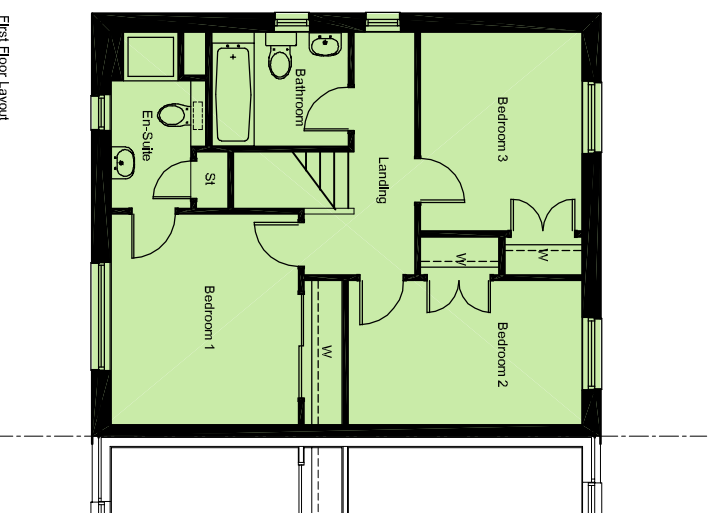
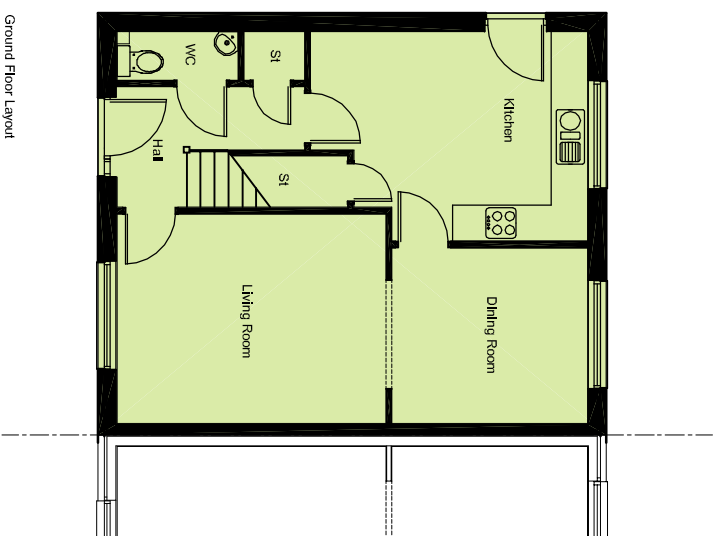




Clover Way

House Type Ardlaw Semi



ground floor layout	
living room	3,460 x 4,445
dining room	2,900 x 3,230
kitchen / breakfast	3,460 x 4,575
toilet	0,805 x 2,000

first floor layout	
bedroom 1	3,475 x 3,090
bedroom 2	2,375 x 3,860
bedroom 3	3,275 x 2,660
bathroom	1,875 x 2,250
en-suite	2,100 x 1,315

WARNING TO HOUSE PURCHASERS

The contents of this drawing may be subject to change at any time and alterations and variations can occur during the progress of the works without revision of this drawing.

Nor do the contents of this drawing constitute a contract, part of any contract, or a warranty.

